

Piling Design and Installation

- Health and Safety trained operatives and management
- Confined spaces trained site and management team
- CSCS scheme in operation for site and supervision staff

Carnon Contracting provides a service for mini piling and traditional underpinning for almost any situation. The main schemes undertaken tend to be subsidence or landslip affected properties and confined spaces are a specialty. We have numerous drill rigs that can undertake this work including a Holman Unitrak that can enter through standard doorways.

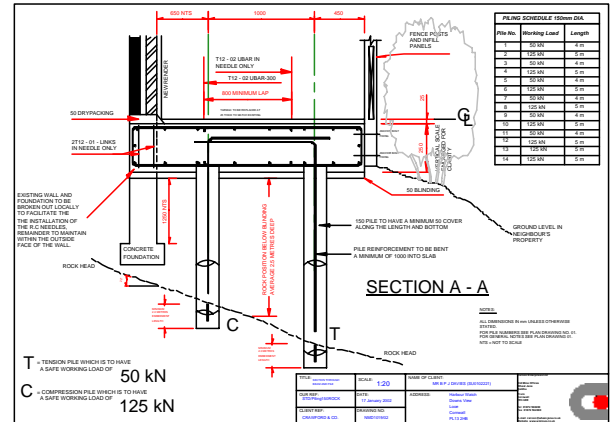
The types of Client we deal with vary from the domestic House Owners, Developers, Engineers, Surveyors, Loss Adjusters, Local District Councils, County Councils together with Railtrack and other such large organisations.

There are different types of foundation solutions :-

- **Steel Cased Mini piling** is used for transferring foundation support to a firm underlying strata. This is particularly suitable for filled or contaminated ground and soft or water bearing subsoils. It is a common choice for new build and underpinning schemes in non clay areas of the country. Piles used vary from 85mm to 200mm diameter. These are installed using rotary drilling techniques.
- **Underpinning** by traditional methods can be undertaken by our experienced and skilled workforce. This is an economic and reliable system which can be carried out up to depths of up to 2 metres.



Piling for a new housing scheme at Helston, Cornwall



Typical external foundation design for a scheme at Looe, Cornwall



Our major Client list includes:-

- Cunningham Lindsey
- Crawford and Company
- Avon Insurance
- Eagle Star
- Norwich Union
- Royal & Sun Alliance
- Numerous Consulting Engineers

Old Mine Offices • Wheal Jane
Baldhu • Truro • Cornwall TR3 6EE

T +44(0)1872 562011
+44(0)1872 562013
+44(0)1872 562017
F +44(0)1872 562020
E carnon@wheal-jane.co.uk
W www.carnon-contracting.co.uk



Wheal Jane Enterprises Limited t/a Carnon Contracting is part of the Wheal Jane Group of Companies